



*From farm to your
aromatherapy space*





FARM TO AROMATHERAPY™

OUR STORY

Your personal aromatherapy spa at home!

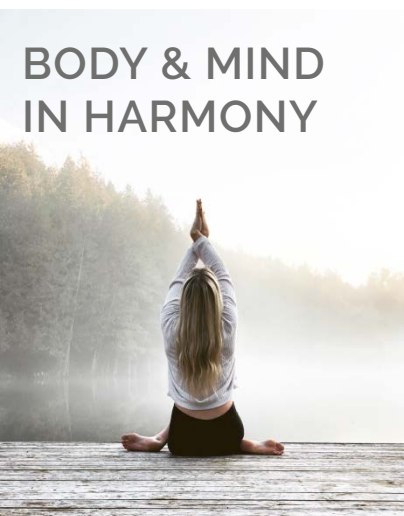
How we feel and what we need differs from day to day. For centuries, the healing and mood shifting power of essential oils has been known and used for therapeutic reasons.

Farm to aromatherapy™ brings only the finest ingredients to your home.

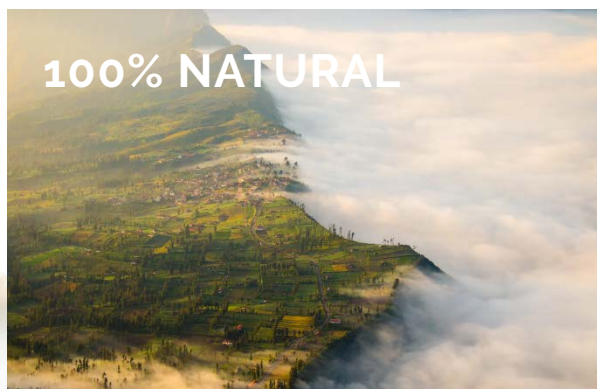
Whether you need a little extra help to focus, relax or sleep or a fresh & sparkling boost of energy, our eight unique aromas and blends are designed to treat your specific needs and to help you feel at your best!

At Farm to Aromatherapy™, we are committed to bringing fresh botanical ingredients from selected farms to your aromatherapy space. Our products contain globally-farmed botanicals and our essential oils are 100% pure.

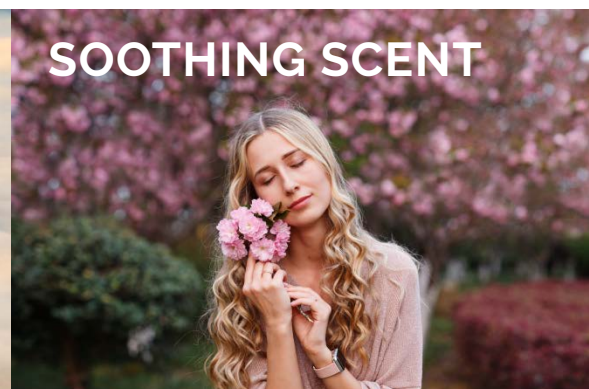




**BODY & MIND
IN HARMONY**



100% NATURAL



SOOTHING SCENT



BEST QUALITY



**COMPLETE
PRODUCT SERIES**



HEALTH CONSCIOUS



SEASONABLE



**SELECTED
INGREDIENTS**

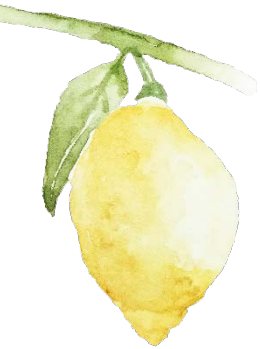


NATURE-LOVING



LOVE FOR DETAIL

We promote the well-being of people
in a wholesome way with the power of nature.



OUR PROMISE



**NATURAL
BOTANICALS**

Farm to Aromatherapy™ Essential Oils products are created from fresh botanical ingredients, globally sourced and sustainably farmed. As we grow our aromatherapy programs, we promise to protect the planet's resources to the best of our ability and support the growers of tomorrow.



**NO ANIMAL
TESTING**

Our products are not tested on animals. Aromatherapy is designed to promote mental and physical well-being. At Farm to Aromatherapy™, we believe an important part of that is knowing that the physical and mental well-being of other living things were not put at risk in the development of our products.



**GC/MS TESTED FOR
100% PURITY**

With the help of scientific laboratory analyses (GC / MS), we monitor compliance with our high quality requirements for our products.



**FREE FROM
SYNTHETIC
FRAGRANCES
AND CHEMICALS**

Our essential oils do not contain synthetic fragrances or chemicals. We are dedicated to sourcing fresh botanicals and providing high quality natural ingredients for the complete line of Farm to Aromatherapy™ products.





Social Responsibility



Our production facility provides our employees with foundational training in health and nutrition, work-life balance, communication skills and occupational safety. We also offer advanced training in functional literacy and leadership.

Farm to Aromatherapy™ believes in the importance of the health and safety of our employees. We work extensively to provide employees with healthcare facilities that are not available to them. With the help of the SSS Foundation, our production facility organizes cancer awareness camps, HIV/AIDS awareness camps and other government health initiatives.

Environmental Responsibility



Farm to Aromatherapy™ Essential Oils products are created from fresh botanical ingredients, globally sourced and sustainably farmed. In our quest to deliver nature's finest bounty, each fragrance is maximized for its full aromatic benefits. As we grow our aromatherapy programs, we promise to protect the planet's resources to the best of our ability and support the growers of tomorrow.

Women Empowerment



We strongly believe that empowering women fully in economic life is essential to build stronger economies, achieve internationally agreed goals for development and sustainability, and improve the quality of life for women, men, families and communities.

Sustainability



Our focus is on minimizing waste, reducing chemical usage, recycling water, rainwater harvesting, preventing pollution, using solar power, using cleaner production techniques, and complying with environmental legislations and regulations.



THE BENEFITS AND EFFECTS OF AROMATHERAPY

*Eight skillfully created scents,
from 100% pure essential oil,
designed for your individual aromatherapy.*



BENEFIT:

Guides inner peace

Lavender

The sweet scent of lavender combats restlessness and irritability, helps improve sleep and guides inner peace.

BENEFIT:

Promotes positivity

Eucalyptus

Stimulating and revitalizing, the aroma of eucalyptus transforms any room into a therapeutic spa.



BENEFIT:

Uplifting and energizing

Lemon

Energizing and invigorating lemon oil is expressed from peel to deliver a fresh aroma that brightens any room.



BENEFIT:

Uplifts your mood

Peppermint

The refreshing menthol of peppermint delivers a cooling sensation that uplifts the mind with a sense of positivity.



**BENEFIT:**

Inspires calming

Relaxation

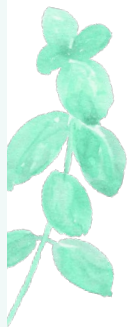
This calming and grounding blend of lavender, lavandin and cedarwood creates a restful blend that relaxes your mind.

BENEFIT:

Promotes inner harmony

Focus

This playful blend of peppermint, lemon and basil grounds the mind, promotes inner harmony and helps with concentration.

**BENEFIT:**

Renews sense of positivity

Refresh

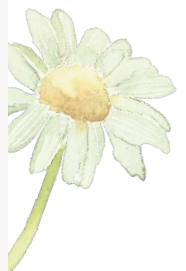
Stimulating and revitalizing. This aromatic blend of grapefruit, basil and lime inspires the mind and creates a renewed sense of positivity.

BENEFIT:

Calms your mind

Serenity

Inspires calming. This soothing blend of lavender, chamomile and bergamot creates a restful blend that calms your mind.





ESSENTIAL OILS

100% pure essential



Lavender, essential oil
10ml



Eucalyptus, essential oil
15ml



Lemon, essential oil
15ml



Peppermint, essential oil
15ml



Relaxation, essential oil
15ml
(composition from lavender,
lavandin and cedarwood)



Focus, essential oil
15ml
(composition from peppermint,
lemon and basil)



Refresh, essential oil
15ml
(composition from grapefruit,
basil and lime)



Serenity, essential oil
15ml
(composition from lavender,
chamomile and bergamot)



SCENTED CANDLES

FROM RAPESEED WAX MIXTURE



Lavender Vegetable Wax Blend Candle
(infused with essential oil)



Eucalyptus Vegetable Wax Blend Candle
(infused with essential oil)



Lemon Vegetable Wax Blend Candle
(infused with essential oil)



Peppermint Vegetable Wax Blend Candle
(infused with essential oil)



Relaxation Vegetable Wax Blend Candle
(composition from lavender, lavandin and cedarwood)



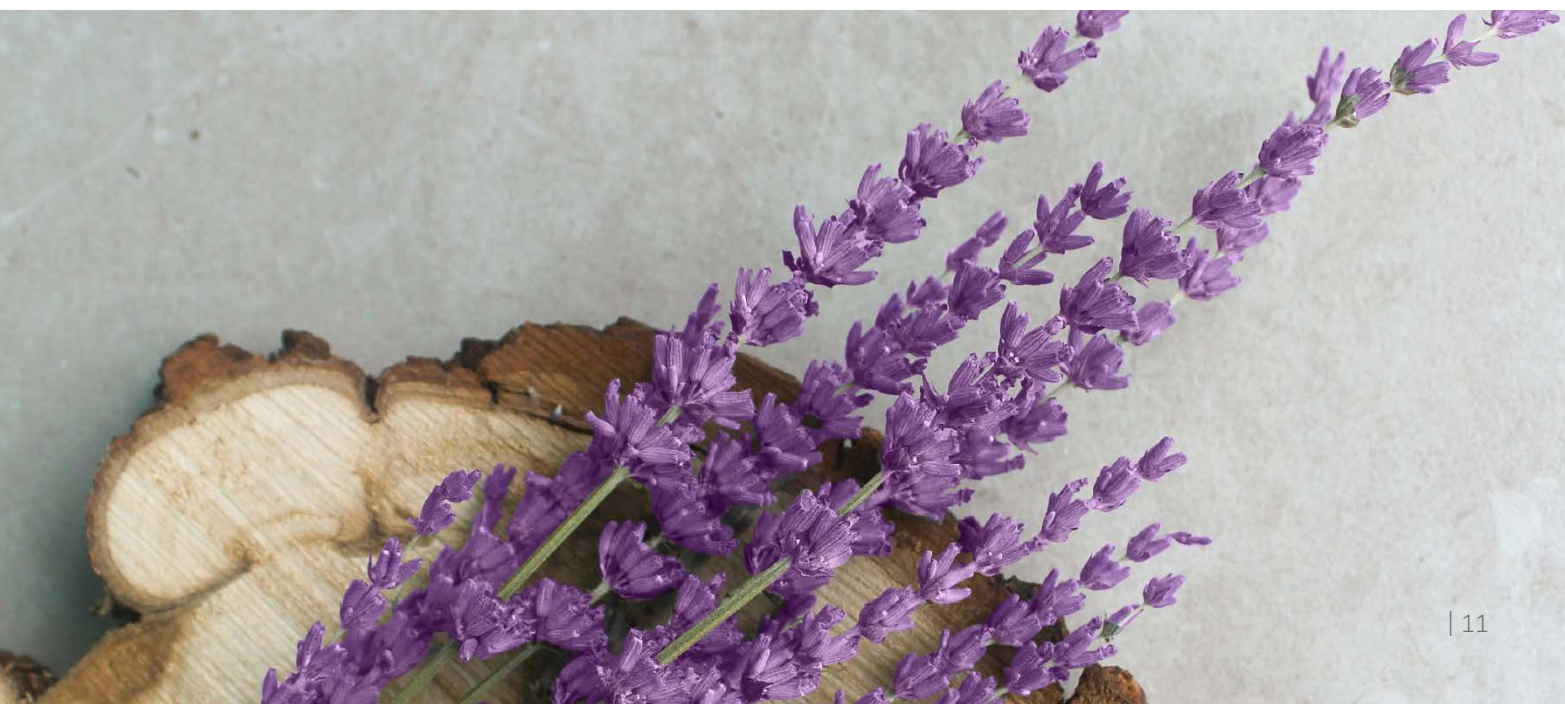
Focus Vegetable Wax Blend Candle
(composition from peppermint, lemon and basil)



Refresh Vegetable Wax Blend Candle
(composition from grapefruit, basil and lime)



Serenity Vegetable Wax Blend Candle
(composition from lavender, chamomile and bergamot)





REED DIFFUSER

infused with essential oil



Lavender, reed diffuser
150ml



Eucalyptus, reed diffuser
150ml



Lemon, reed diffuser
150ml



Peppermint, reed diffuser
150ml



Relaxation, reed diffuser
150ml
(composition from lavender,
lavandin and cedarwood)



Focus, reed diffuser
150ml
(composition from peppermint,
lemon and basil)



Refresh, reed diffuser
150ml
(composition from grapefruit,
basil and lime)



Serenity, reed diffuser
150ml
(composition from lavender,
chamomile and bergamot)



NOVELTY



CBD - What is it?

The full name is cannabidiol and it is a natural component of the hemp plant, which naturally interacts with the body's endocannabinoid system (ECS).

This promotes wellness without being psychoactive, making CBD one of the most effective ingredients.

As consumers associate CBD with a healthy, natural and holistic approach, its popularity continues to rise.



SENSUAL. NATURAL. AFFORDABLE.

GALA GROUP GmbH | Technologiepark 9a | 91522 Ansbach, Germany
Phone: +49 981 9873904-0 | E-Mail: info@gala-group.com